

AG ÚSÁID LEGO WE DO 2.0 CHUN SCILEANNA EOLAÍOCHTA AGUS MATA A MHÚINEADH.

FRANK Ó TORMAIGH

GAELSCOIL EISCIR RIADA , LEAMHCÁN

M. OID SA BHFOGHLAIM DHIGITEACH



RÉASÚN

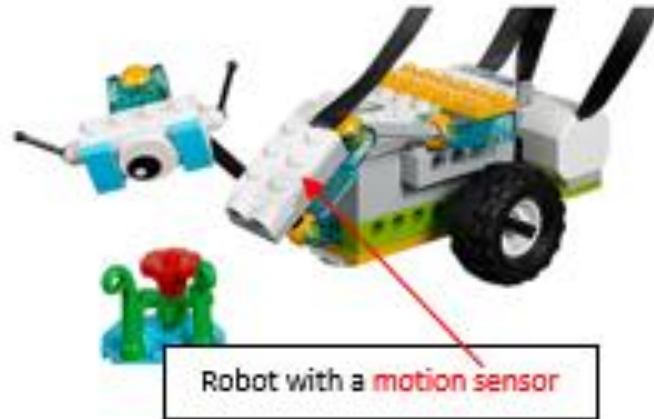
- Stráitéis Dhigiteach do Scoileanna (DES 2015)
- Tuairisc Oideachas STEM (STEM Education Review Group, 2016).
- Curraclam Mata Nua ag teacht.

LEGO WE DO 2.0. CÉN FÁTH?

- An sprioc atá ag Lego Education ná scileanna eolaíochta agus mata a fhorbairt tríd obair fiosrach agus chomhoibreach.
- Béim ar scileanna ríomhchlárú (Computational Thinking) agus scileanna 21ú aois.
- Béim ar scileanna fadhb réiteach atá tábhachtach trasna an gcuraclam.



CRUA EARRAÍ





BOG EARRA

- Ríomhchlárú



SAMPLA D'OBAIR NA BPÁISTÍ AG ÚSÁID AN AIP

Firstly, the group recorded their **plan** and initial construction.



Tá Bláthnaid, Luke, Sadhbh Agustin Darragh. Ag déanadh róbo ar mars. 🤖🤖🤖🤖

The children then recorded their **algorithm** and completed construction.



Is é seo an ríomhchlárú. 🤖

Here the children are documenting the construction process.



Tá mars bar 2.0 beanach reidh. 🤖

The then recorded how they were changing the design of their robot by making it **longer**.





Tá muid ag déanadh róbo amhán ach tá dhá piasey leago an. 🤖

The children documented the problem of the **robot breaking** here.



Ceapaim go beidh gach rud ceart go lír ag an deireadh. 🤖

Trí thimpist bris Bláthnaid an robo. 🤖🤖🤖



Tá muid ag íreadh mars bar 2.0 a bheidh níos fuide.

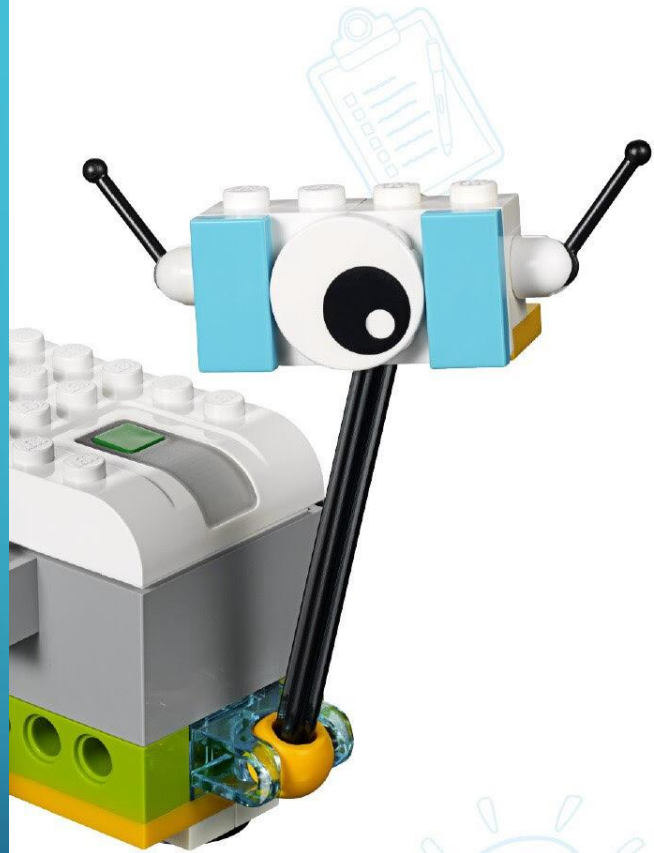
Robot is now almost completed.







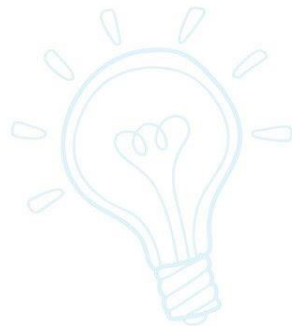
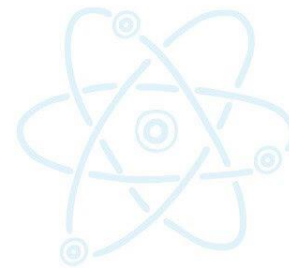
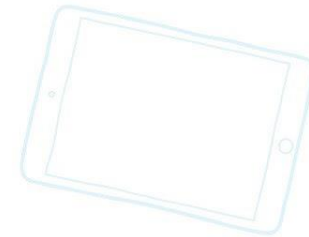


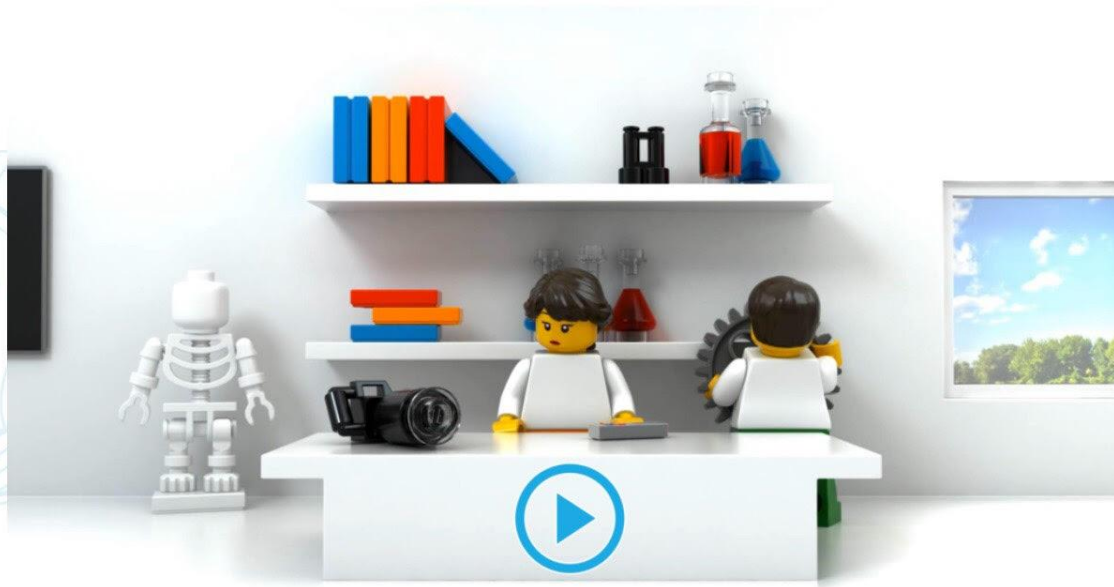


WeDo 2.0



education







Getting Started

A. Milo the Science Rover



B. Milo's Motion Sensor



C. Milo's Tilt Sensor



D. Collaborating



Guided Projects - Science

1. Pulling



2. Speed



3. Robust Structures



4. Frog's Metamorphosis



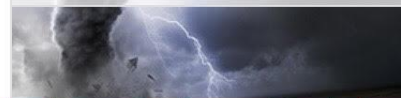
5. Plants and Pollinators



6. Prevent Flooding



7. Drop and Rescue



8. Sort to Recycle





Getting Started

A. Milo the Science Rover



Guided Projects

1. Pulling



5. Plants and Pollinators



A. Milo the Science Rover



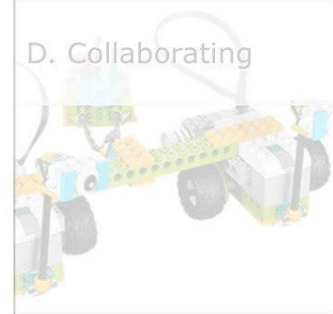
In this project, you will:

- Explore different ways scientists and engineers reach remote places.
- Create and program Milo the Science Rover.
- Document how Milo can help you discover a special plant specimen.



Go

D. Collaborating



Frog's Metamorphosis



8. Sort to Recycle





EXPLORE ● ●

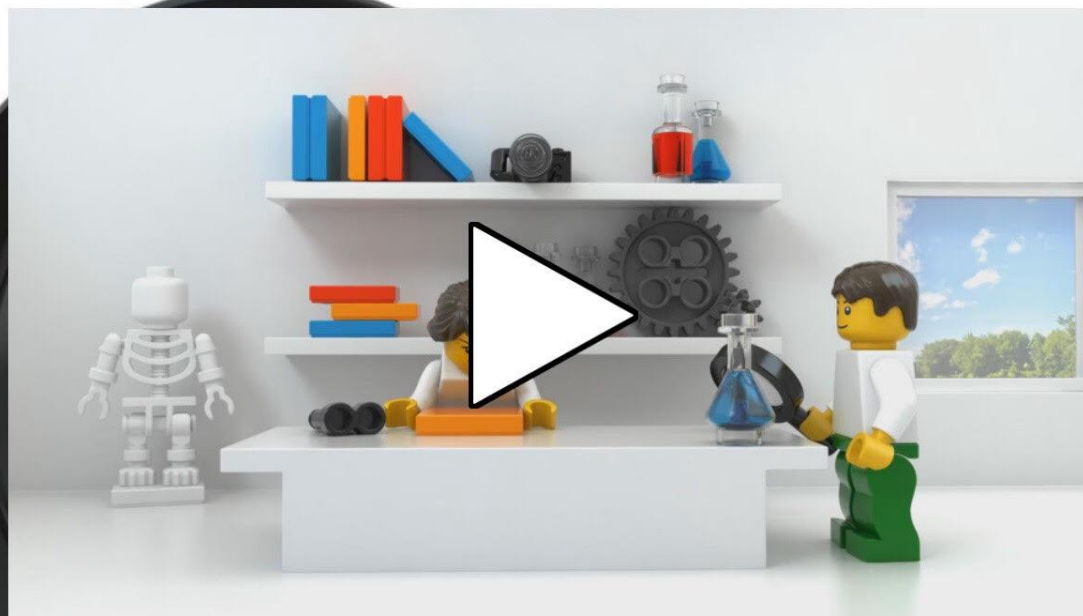
CREATE ● ● ● ●

SHARE ● ● ●



Max and Mia are ready to explore the world and make some great discoveries.

They will need some help, especially to explore remote places, in order to find a special plant specimen.

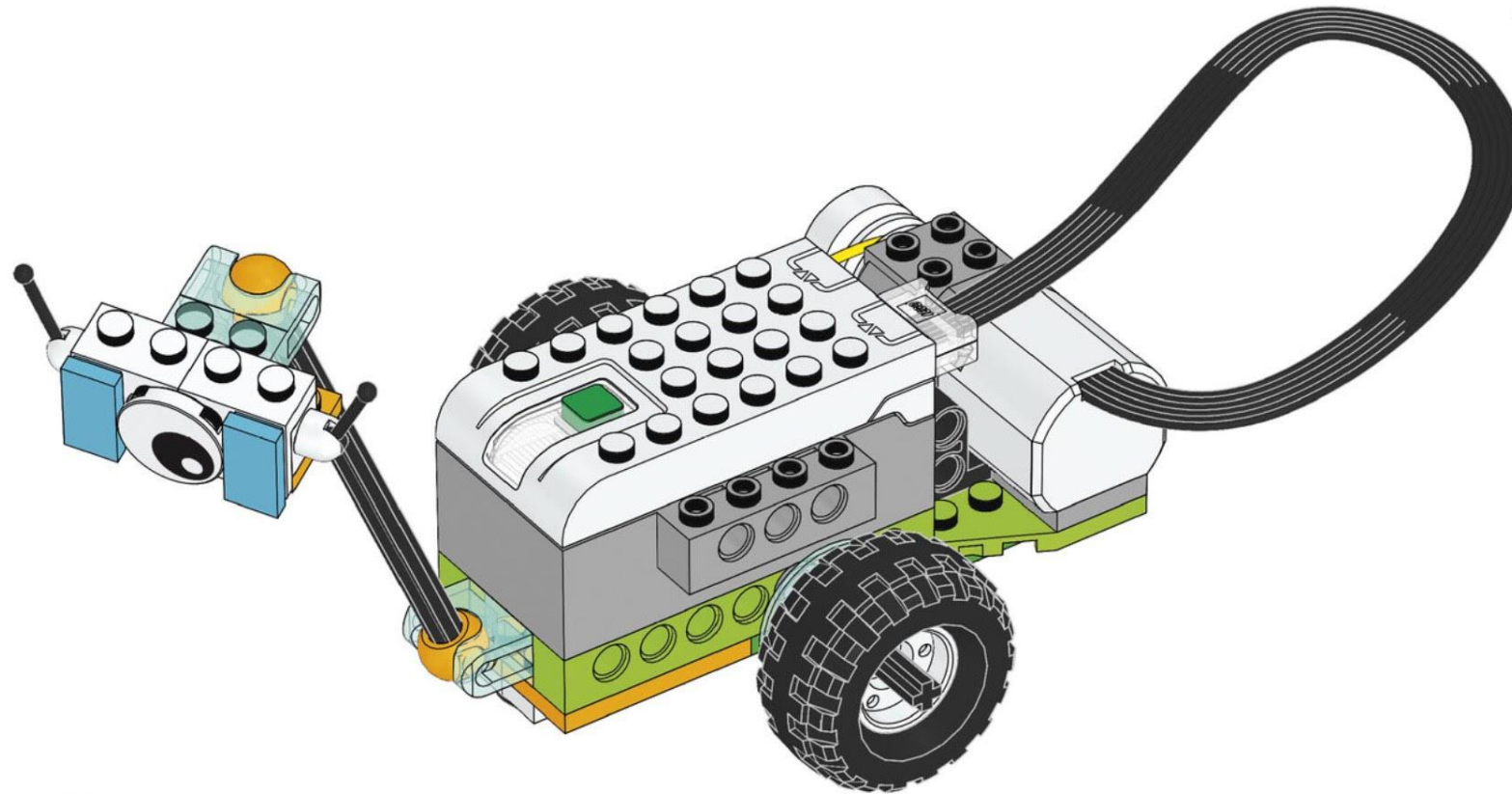




EXPLORE ● ●

CREATE ● ● ● ●

SHARE ● ●





EXPLORE ● ●

CREATE ● ● ● ● ●

SHARE ● ●



Program Milo to move forward.



AN CURACLAM EOLAÍOCHTA

FORBAIRT SCILEANNA

- Ag ceistiú
- Ag breathnóireacht
- Ag tuar
- Ag imscrúdú agus ag tástáil
- Ag meas agus ag tomhas
- Ag anailísiú (ag sórtáil agus ag rangú ag aithint patrún ag léirmhíniú)
- Ag clárú agus ag cur in iúl
- (DES, 1999)